



thurrock.gov.uk

Demography JSNA

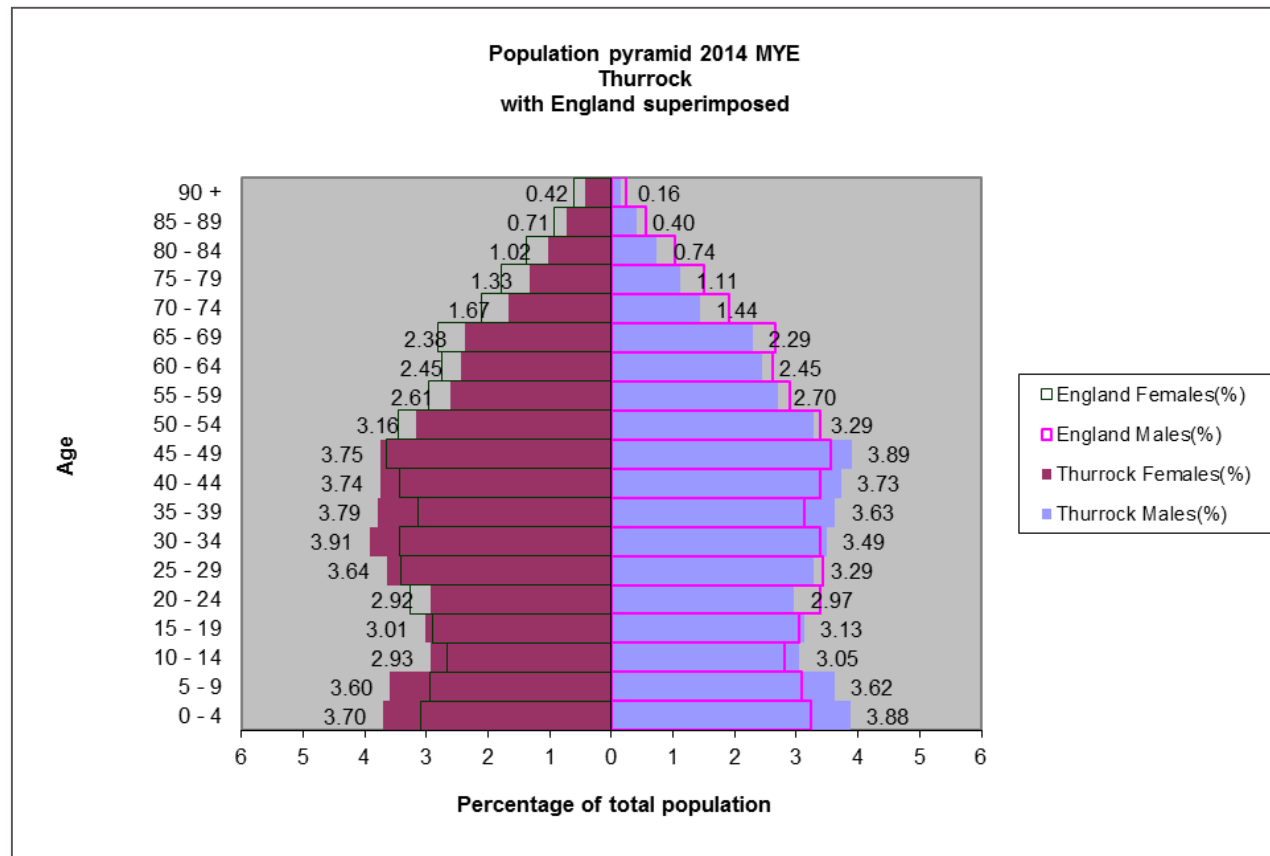
Maria Payne
Health Needs
Assessment Manager

1st October 2015

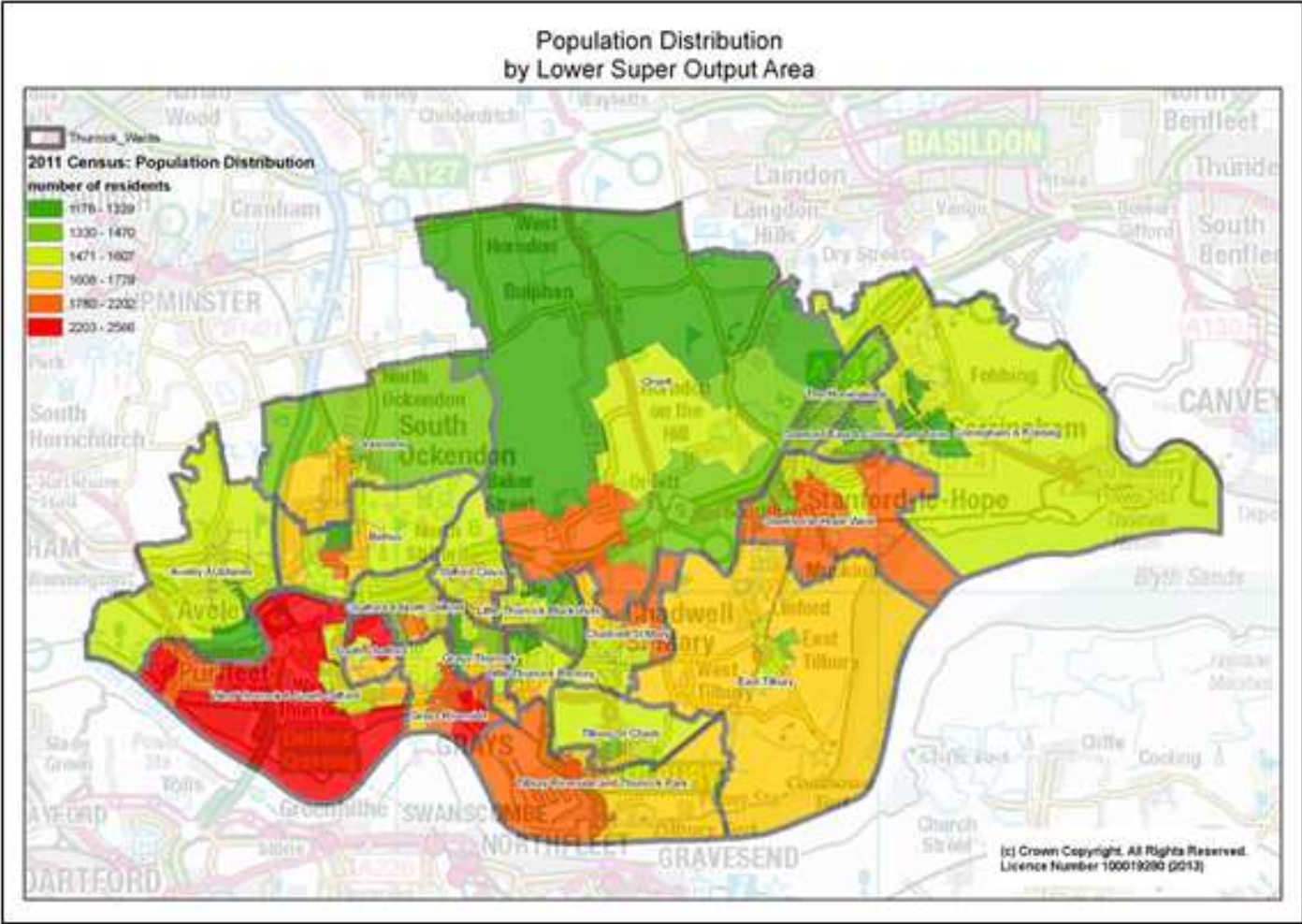


Population by age and gender

Thurrock has an estimated population of 163,270.

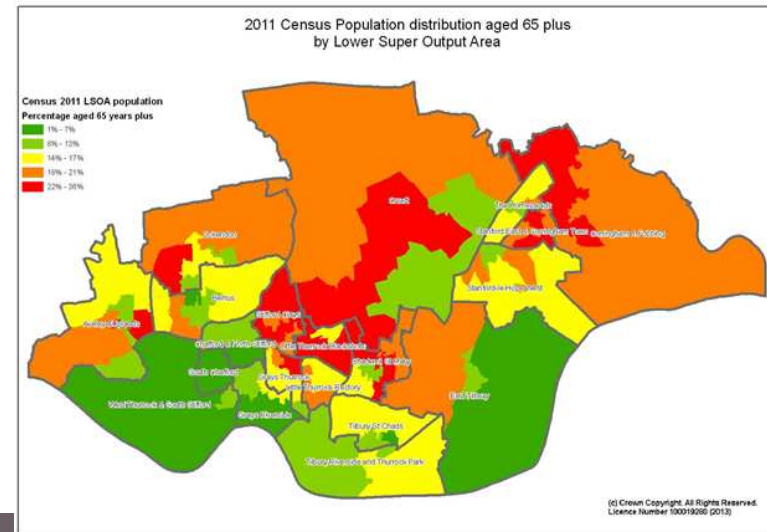
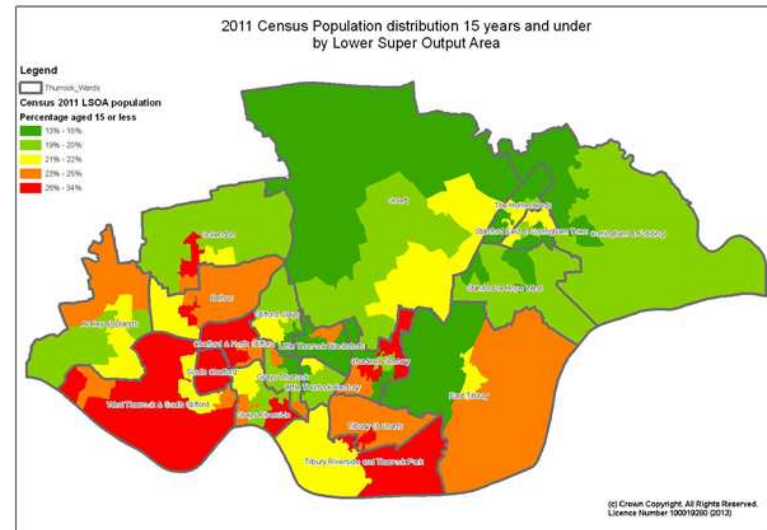


Population Distribution



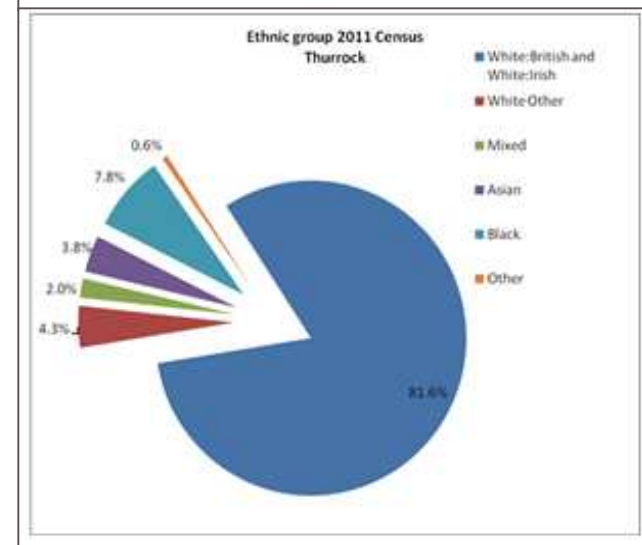
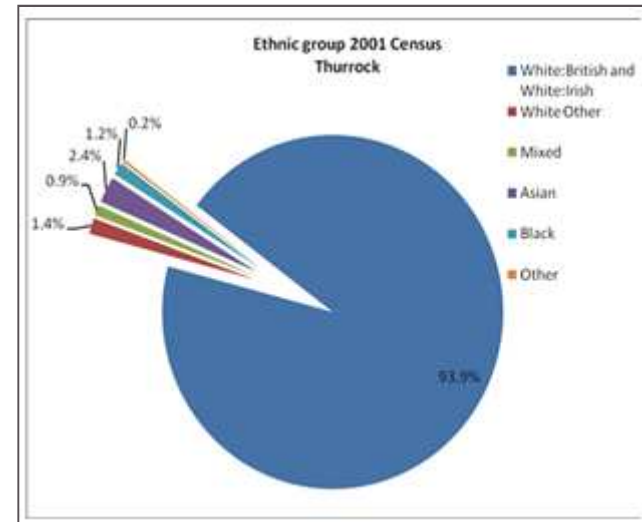
Population Distribution – key age groups

- Areas with highest proportions of 0-15 year olds are generally in the south and south west of the borough.
- Areas with highest proportions of those aged 65 years and over are generally in the north of the borough.



Ethnicity

- Thurrock's population is becoming more ethnically diverse
- In 2001, 93.9% residents were White British and Irish – in 2011, this was 81.6%.
- Particularly large increases within the Black and Other White Groups.



How else has Thurrock's population changed?

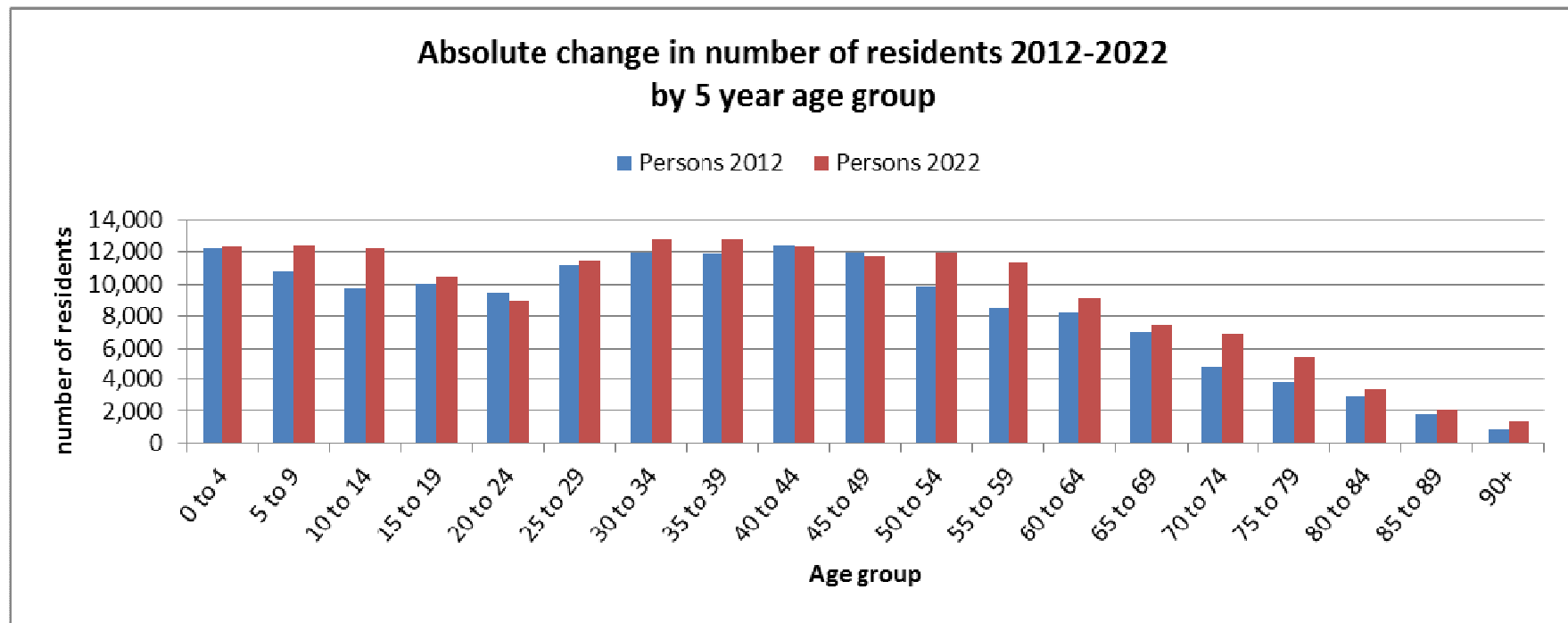
160,849 → +2,421 → 163,270

INFLOW:
2,359 births
7,345 internal migrants
940 international migrants
8 migrants due to other causes
10,652

OUTFLOW:
1,147 deaths
6,612 internal migrants
472 international migrants
8,231

Population Projections

- Thurrock's population is increasing – between 2012 and 2022 there will be an additional 16,975 residents in the borough, equating to an increase of 11%.
- The most significant rises will occur in age groups clustered in those aged 0-14 years, 25-29 years, 50-59 years, and 70 years and over.



Housing Tenure

- Almost two thirds of properties in Thurrock are owned, which is similar to regional and national proportions.
- Total number of households has increased by 3.6% between 2001 and 2011.
- Private sector rented housing has increased by 137.9%.

Household Structure

- Thurrock has fewer households aged 65 and over than regional and national averages.
- One person households have increased by 14.5% between 2001 and 2011.
- In general there has been a substantial increase in the number of households with dependent children.
- Projections estimate that an additional 4,006 people aged 65 and over may be living alone by 2030.

What can this document enable us to do?

- Understand the changing nature of our population
- Raise awareness of the differing population demographics within the borough
- Benchmark key indicators
- Inform key strategies (e.g. Health and Wellbeing Strategy)



Questions?